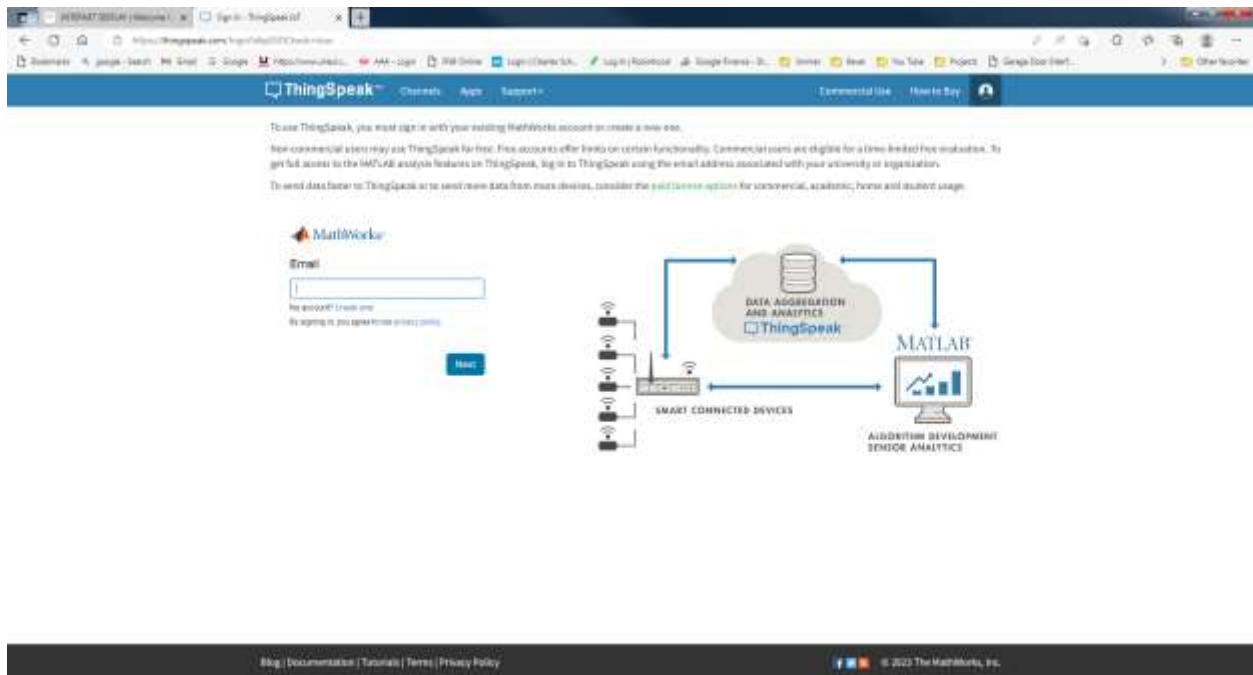


1-1-2023

### ThingSpeak:

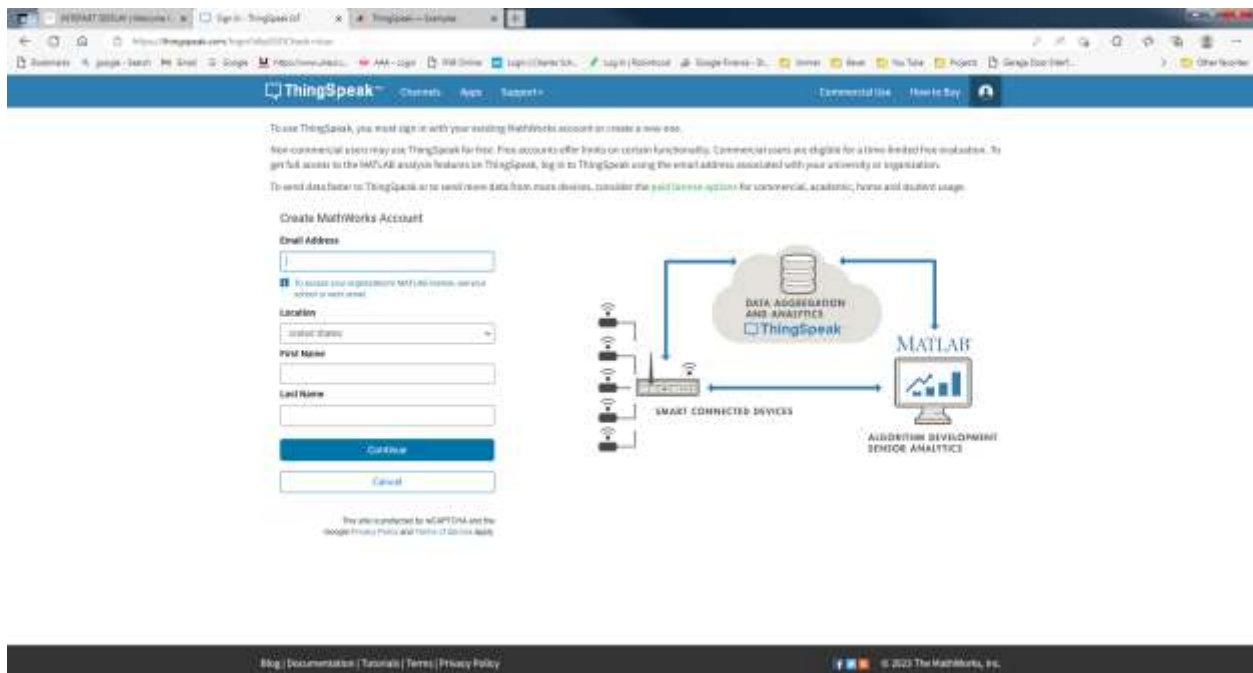
ThingSpeak is an IoT analytics platform service that allows you to aggregate, visualize, and analyze live data streams in the cloud. You can send data to ThingSpeak™ from your devices, create instant visualizations of live data, and send alerts using web services like Twitter® and Twilio®. With MATLAB® analytics inside ThingSpeak, you can write and execute MATLAB code to perform preprocessing, visualizations, and analyses. ThingSpeak enables engineers and scientists to prototype and build IoT systems without setting up servers or developing web software.

<https://thingspeak.com/login?skipSSOCheck=true>



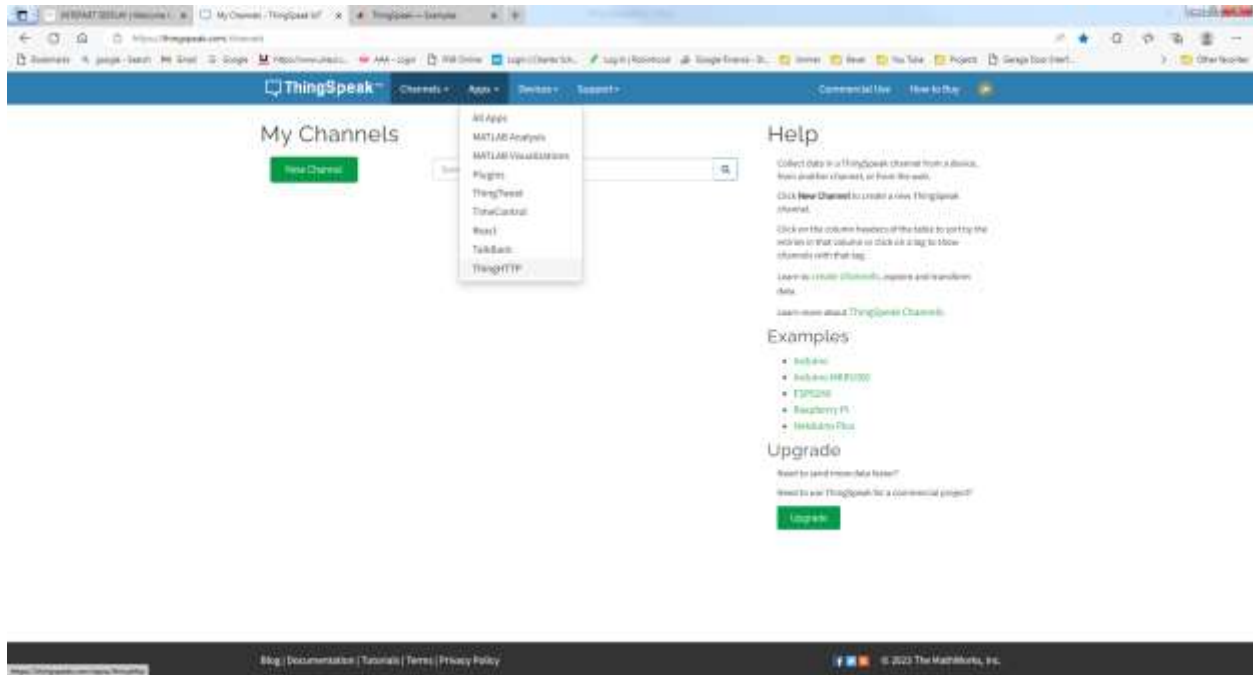
### Create an Account:

<https://thingspeak.com/login?skipSSOCheck=true>



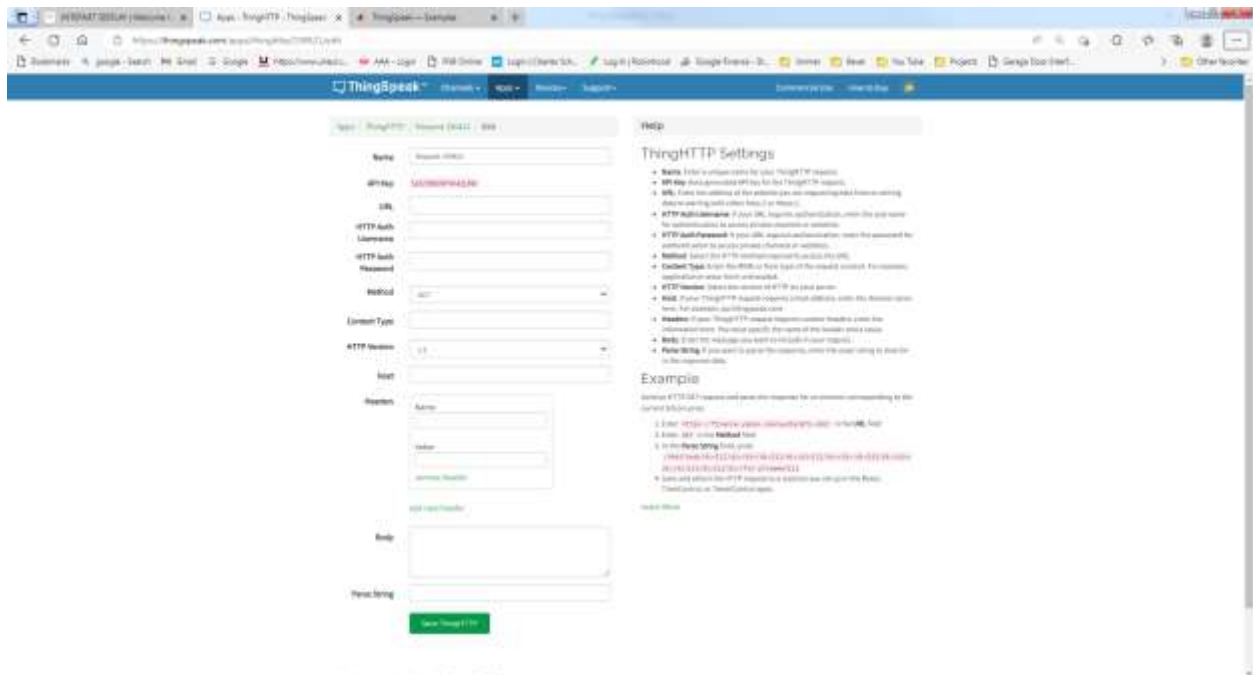
## Setup ThingHTTP:

<https://thingspeak.com/channels>



## Add New ThingHTTP to get data from Web Site:

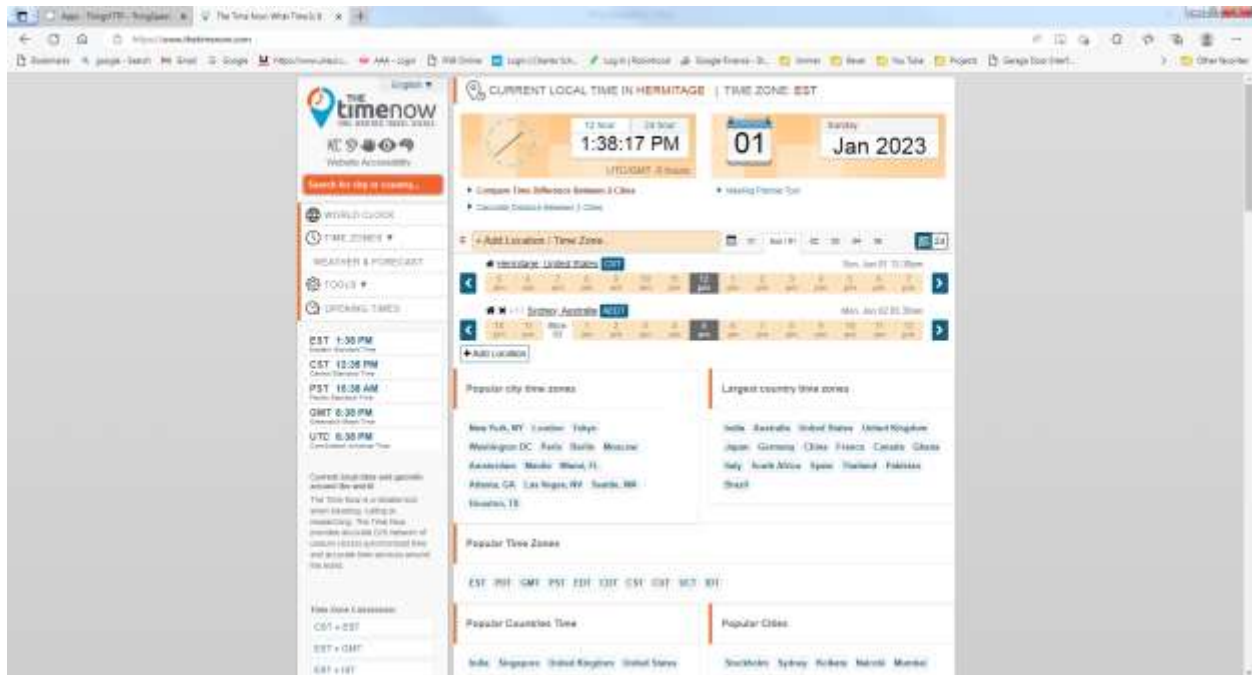
<https://thingspeak.com/apps/thinghttp/190421/edit>



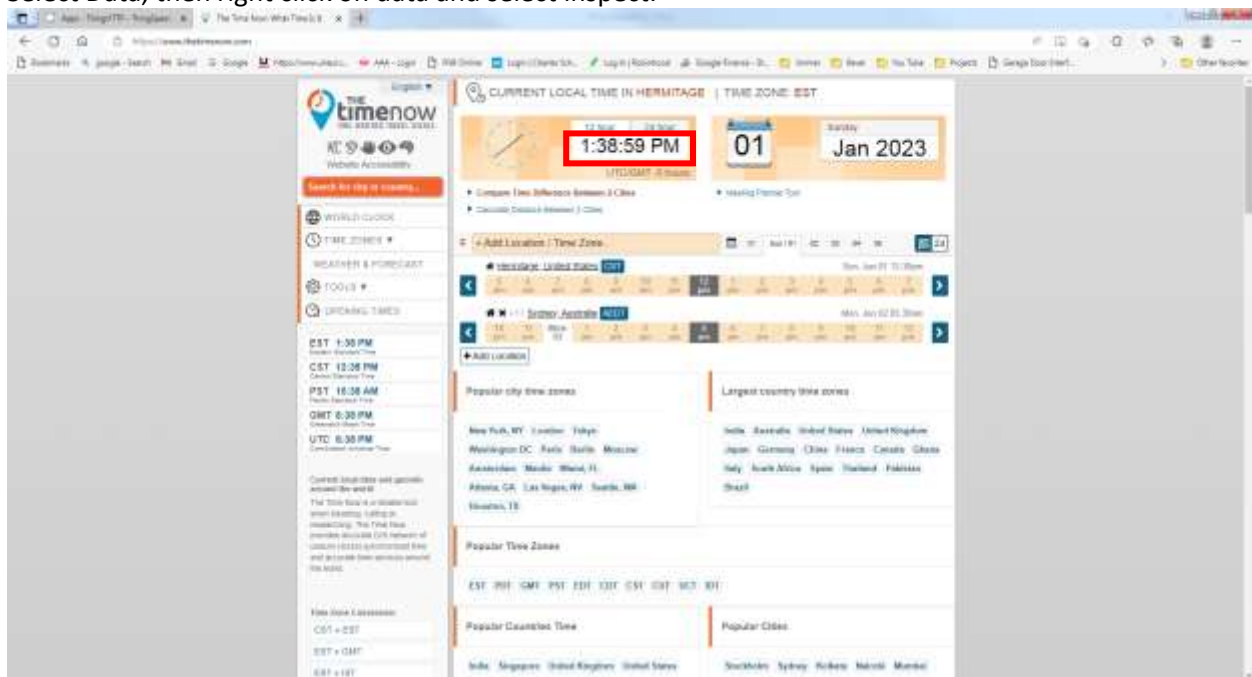
**Example:**

Go to web site with data to be retrieved.

<https://www.thetimenow.com/>



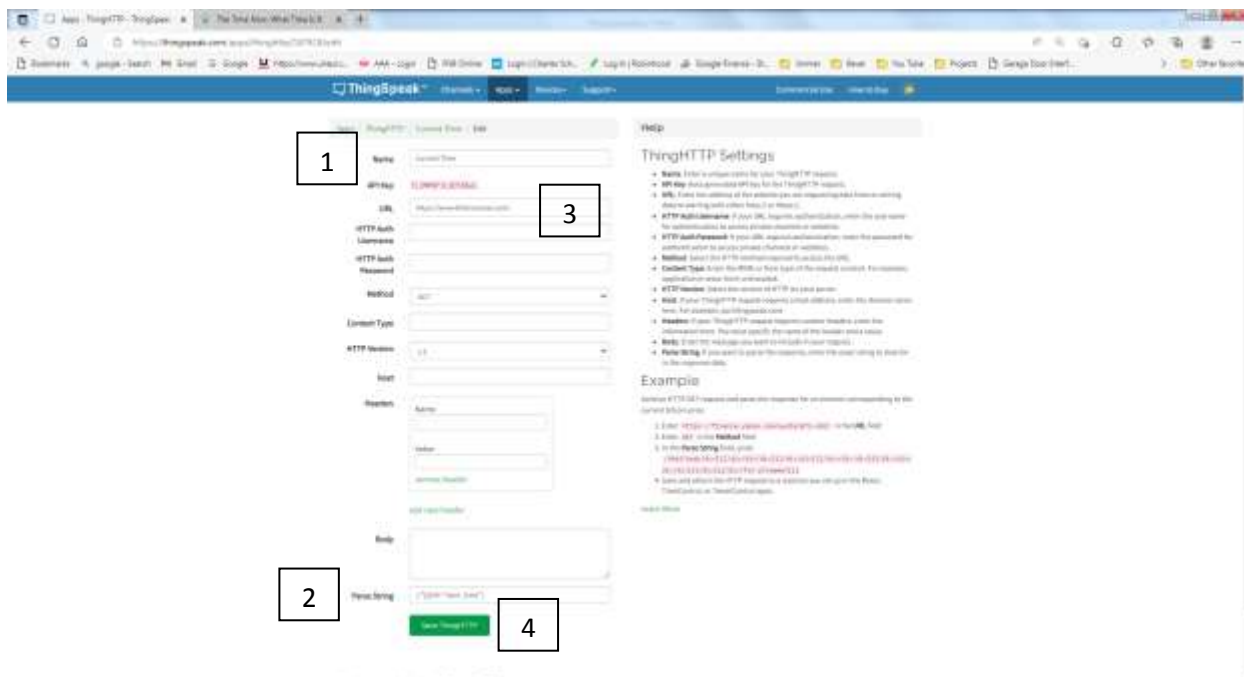
Select Data, then right click on data and select inspect.





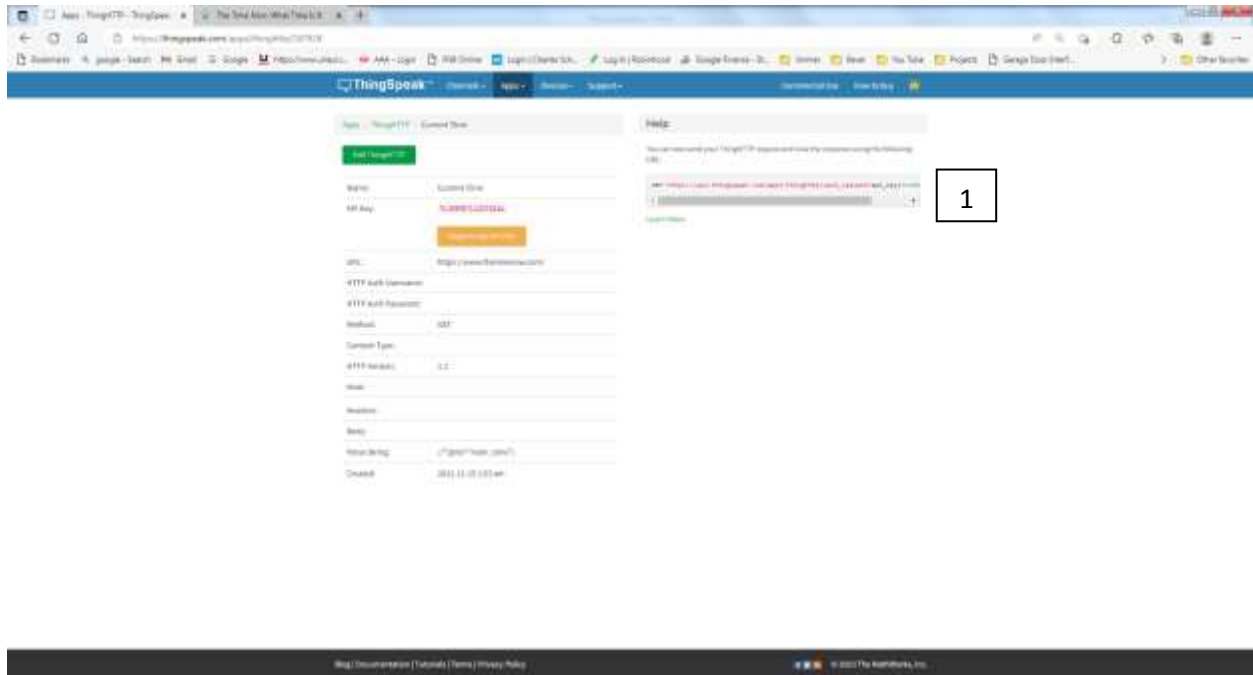
**Go back to the ThingSpeak web site.**

1. Enter Name of ThingSpeak HTTP.
2. Paste the Parse String that was just copied.  
`//*[@id="main_time"]`
3. Enter the UTL Name:  
<https://www.thetimenow.com/>
4. Save ThingHTTP.



1. Copy the URL:

[https://api.thingspeak.com/apps/thinghttp/send\\_request?api\\_key=key](https://api.thingspeak.com/apps/thinghttp/send_request?api_key=key)



2. Enter this URL inside your code: (remember not to include the s in HTTP.)

[http://api.thingspeak.com/apps/thinghttp/send\\_request?api\\_key=key](http://api.thingspeak.com/apps/thinghttp/send_request?api_key=key)

**ESP32 code:**

```
Get_website_data = "http://api.thingspeak.com/apps/thinghttp/send_request?api_key=key";}
```