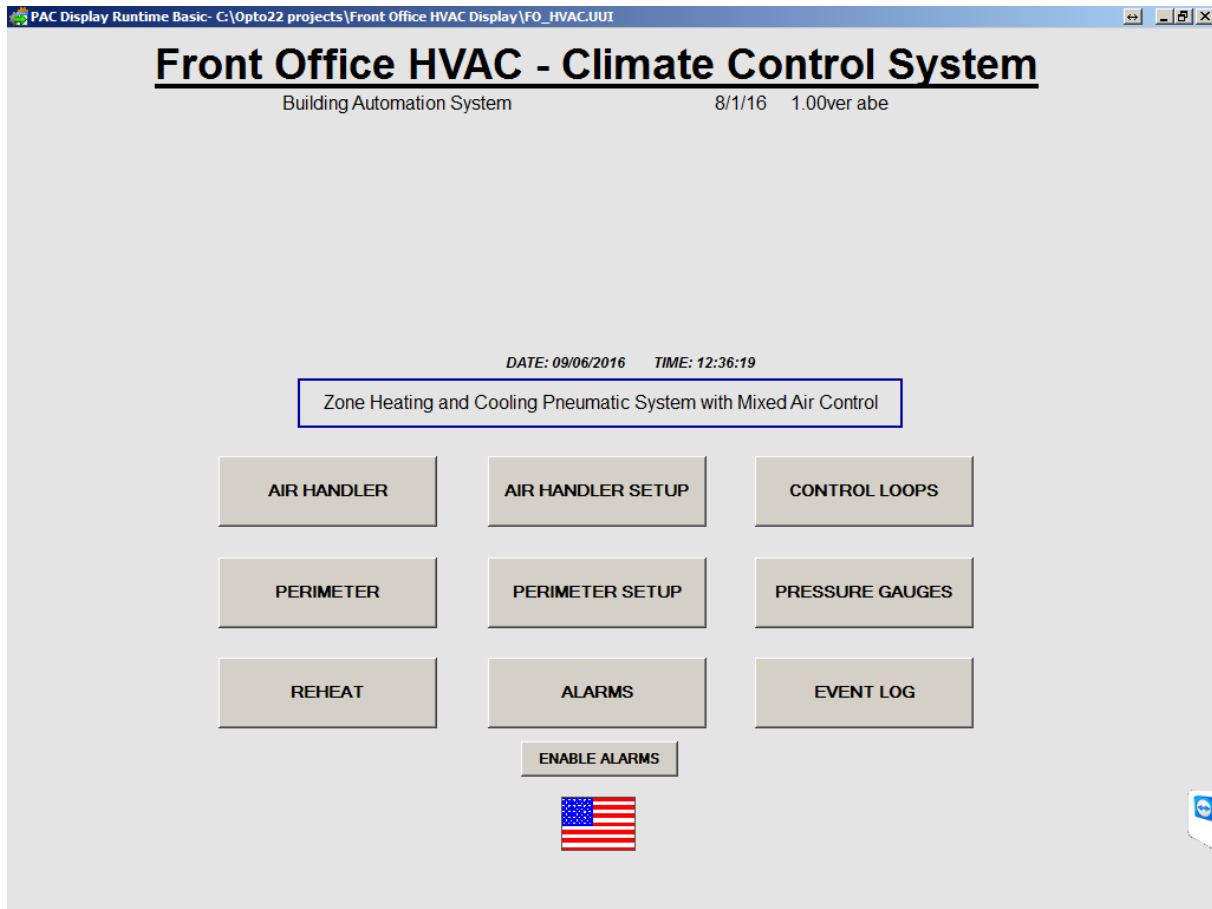


Climate Control System

User Manual



The Climate Control System will control the air temperature using outside air dampers, cooling and heating exchangers. Additional heating can be utilized by using the Reheat zones in the air duct. Window perimeter units are controlled using cooling and heating exchangers.

New Control Features:

- New control using an OPTO22 controller and I/O modules.
- User friendly interface with robust temperature PID control.
- HMI user interface located in the basement which allows remote access. (un:user/pw:hvac)
- Data sent to the PI collection database for history trending.
- Critical Alarms sent via email.

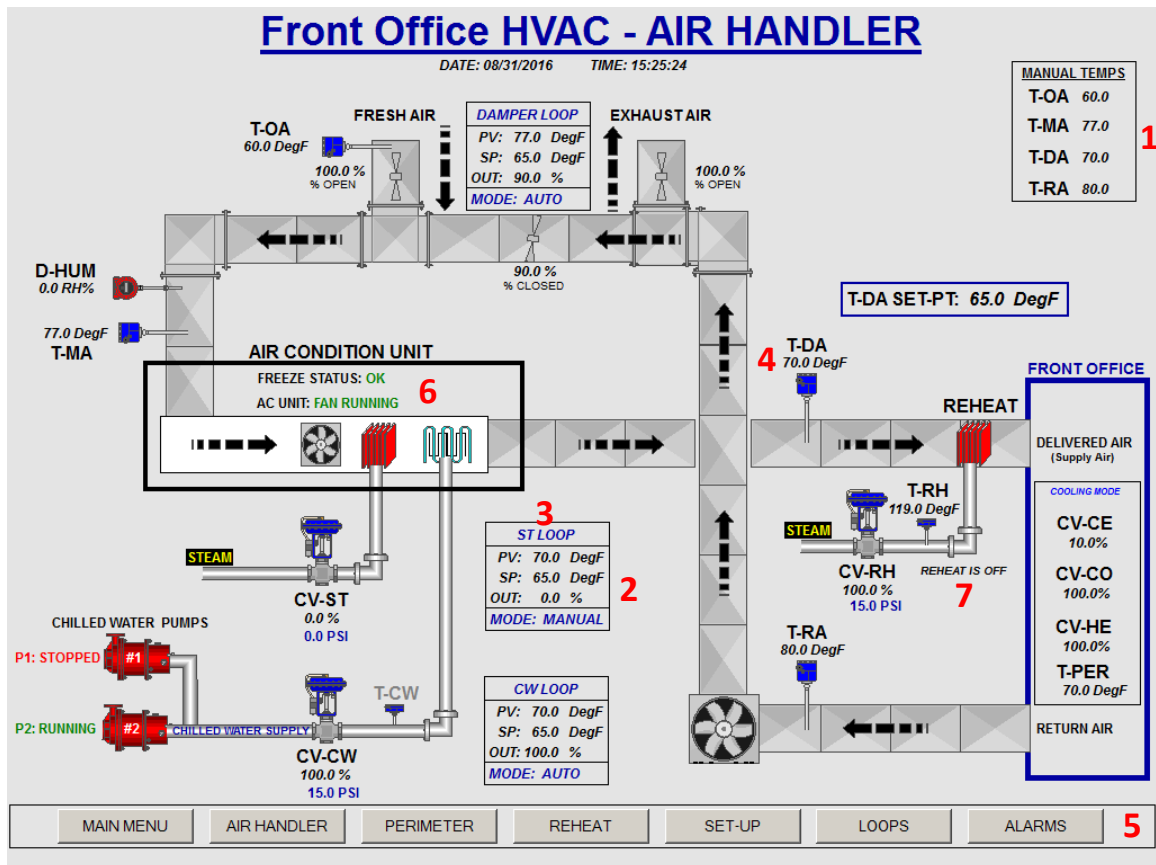
9-6-16
Jim Abraham

Front Office Climate Control System

Table of Contents

<u>SCREENS</u>	<u>PAGE #</u>
AIR HANDLER MIMIC SCREEN	3
AIR HANDLER SET-UP SCREEN	4
WINDOW PERIMETER MIMIC SCREEN	5
WINDOW PERIMETER SET-UP SCREEN	6
REHEAT MIMIC SCREEN	7
CONTROL LOOP SET-UP SCREEN	8
ALARM POP-UP SCREEN	9
EVENT LOG POP-UP SCREEN	10
PRESSURE GUAGES SCREEN	11

AIR HANDLER MIMIC SCREEN:



1. Can enter manual temperature values if a sensor goes bad. 0=use temperature sensor reading.
2. Click on Loop box to have the control loop set-up window to appear.
3. Click on Loop name to have the control loop trend window to appear.
4. Click on a temperature reading to have the temperature trend window to appear.
5. Click on button on bottom of screen to navigate to different screens.
6. Alarms: AC unit Fan Run and Freeze status. (will flash red on screen)
7. Perimeter and Reheat modes.

AIR HANDLER SET-UP SCREEN:

Front Office HVAC- SYSTEM SET-UP EXIT RUNTIME 8

AIR HANDLER

DATE: 08/31/2016 TIME: 15:26:17

	START	END	T-DA SET-PT	DAMPER LOOP OUT CLAMP
OCCUPY TIME:	7	17	65.0 DegF	10.0 %
NON-OCCUPY TIME:	17	7	68.0 DegF	5.0 %

CURRENT T-DA SET-PT: 65.0 DegF

CHILLED WATER PUMP CONTROL

CW PUMP1

4

CW PUMP2

4

PUMP CYCLE TIME: 90 DAYS 24 HR: 13

CW PUMP #1 RUN TIME: 0 DAYS
CW PUMP #1 START DATE:

CW PUMP #2 RUN TIME: 0 DAYS
CW PUMP #2 START DATE:

5 AUTO TRANSFER DISABLED
DAYS TO TRANSFER:

GAUGES

MAIN MENU

AIR HANDLER

PERIMETER

REHEAT

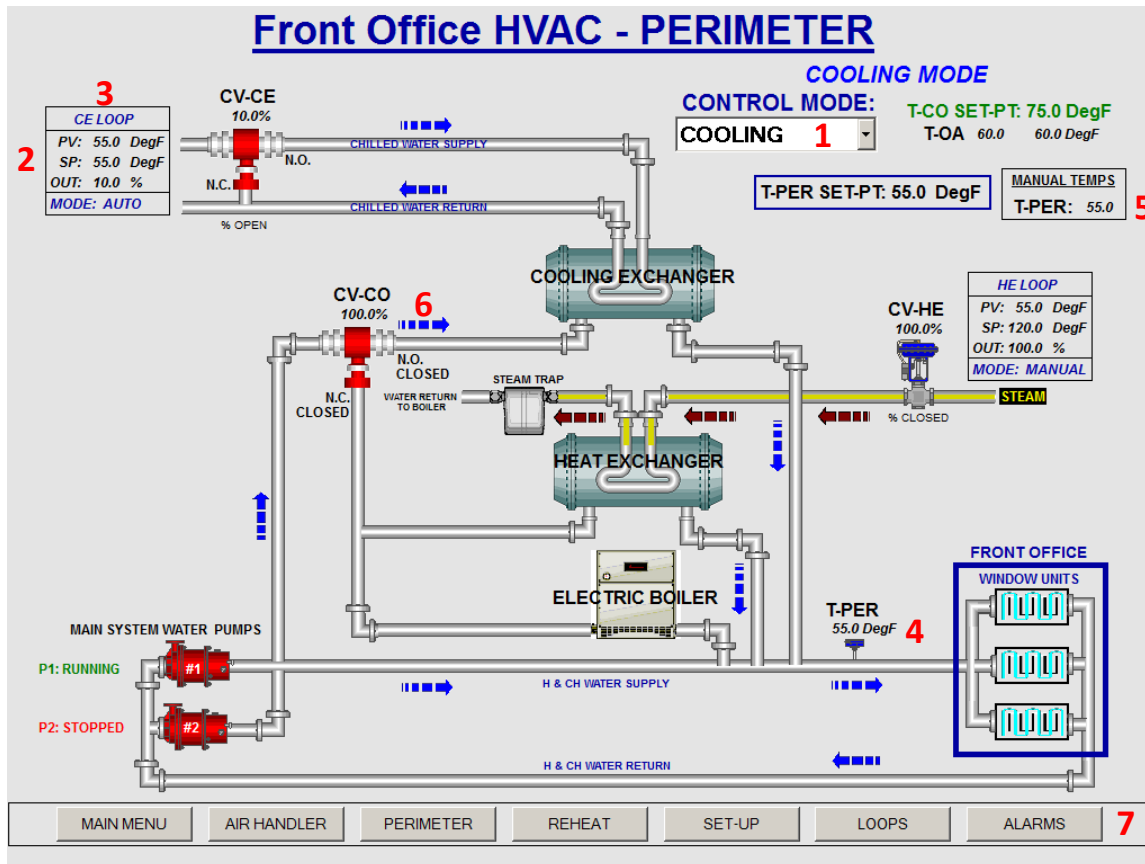
SET-UP

LOOPS

ALARMS

1. Can enter Delivered Air Temperature Set-Points for Occupy and Un-Occupy times.
2. Can enter Damper Loop Output Clamp values for minimum positions. This is in order to comply with the required minimum outside air quantity for Occupy and Un-Occupy times.
3. The green arrow indicates the active time period.
4. Chilled Water Pump Control: Click on "CW Pump1 or 2" button to start/stop pump. Run/stop/Trouble status is displayed to the right.
5. To Auto transfer pumps, click on "Auto Transfer" button. Will count the days running and left until transfer.
6. Click on "Pump Cycle Time" to enter desired number of days for the pump to run.
7. Enter 24 Hr time for what time of day the pump will transfer.
8. Click on the "Exit Runtime" button to exit the runtime program and display the desktop.
Note: if the runtime program is exited, the system will still operate normally.

WINDOW PERIMETER MIMIC SCREEN:



1. Can select control mode using the pull down menu: COOLING/HEATING/AUTO modes.
2. Click on Loop box to have the control loop set-up window to appear.
3. Click on Loop name to have the control loop trend window to appear.
4. Click on a temperature reading to have the temperature trend window to appear.
5. Can enter manual temperature values if a sensor goes bad. 0=use temperature sensor reading.
6. Arrows will indicate cooling or heating water flow.
7. Click on button on bottom of screen to navigate to different screens.

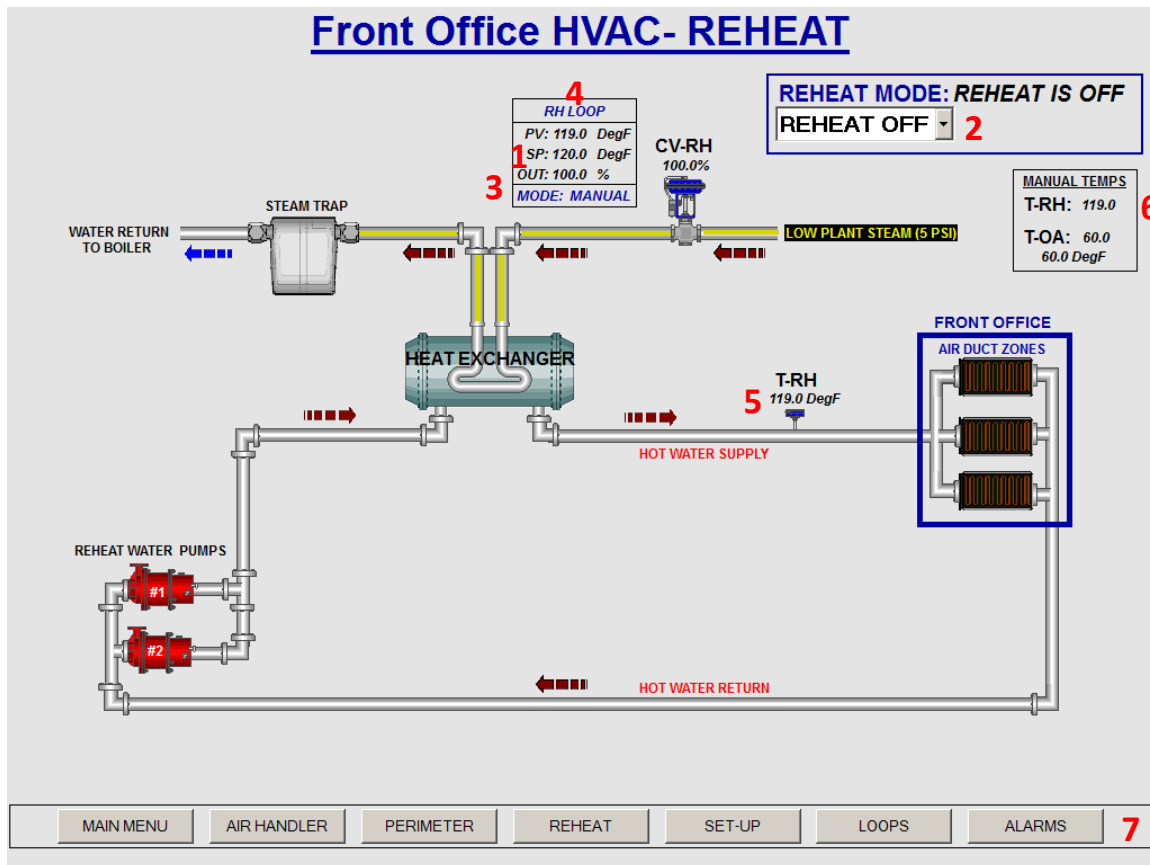
WINDOW PERIMETER SET-UP SCREEN:

The screenshot shows the 'Front Office HVAC- SYSTEM SET-UP' window with the 'PERIMETER' tab selected. The interface includes the following elements:

- DATE:** 09/06/2016, **TIME:** 13:11:03
- OCCUPY TIME:** T-PER SET-PT: 55.0 DegF (COOLING MODE ONLY), T-CO SET-PT: 60.0 DegF (AUTO MODE ONLY)
- NON-OCCUPY TIME:** T-PER SET-PT: 56.0 DegF (COOLING MODE ONLY), T-CO SET-PT: 60.0 DegF (AUTO MODE ONLY)
- CURRENT T-PER SET-PT:** 55.0 DegF, **CURRENT T-CO SET-PT:** 60.0 DegF
- CONTROL MODE:** AUTO (selected), AUTO MODE: AUTO COOLING
- PUMP CYCLE TIME:** 90 DAYS, 24 HR: 8
- MAIN SYSTEM PUMP CONTROL:** MAIN PUMP1 and MAIN PUMP2 buttons, with status indicators for 'PUMP COMMAND TO RUN', 'PUMP RUN FEEDBACK OK', and 'PUMP TROUBLE'.
- AUTO TRANSFER:** DISABLED, with 'DAYS TO TRANSFER:' field.
- EXIT RUNTIME** button in the top right corner.
- GAUGES** button in the bottom right corner.
- Navigation buttons:** MAIN MENU, AIR HANDLER, PERIMETER, REHEAT, SET-UP, LOOPS, ALARMS.

- Can enter Perimeter Water Temperature Set-Points (Cooling Mode only) for Occupy and Un-Occupy times.
Note: Perimeter Water Temperature Set-Point is calculated based on the outside temperatures for the heating mode.
- Can enter Change-Over Water Temperature Set-Points (Auto Mode only) for Occupy and Un-Occupy times.
- Can select control mode using the pull down menu: COOLING/HEATING/AUTO modes.
- The green arrow indicates the active time period.
- Main System Pump Control: Click on "Main Pump1 or 2" button to start/stop pump. Run/stop/Trouble status is displayed to the right.
- To Auto transfer pumps, click on "Auto Transfer" button. Will count the days running and left until transfer.
- Click on "Pump Cycle Time" to enter desired number of days for the pump to run.
- Enter 24 Hr time for what time of day the pump will transfer.
- Click on the "Exit Runtime" button to exit the runtime program and display the desktop.
Note: if the runtime program is exited, the system will still operate normally.

REHEAT MIMIC SCREEN:



1. Reheat Temperature Set-Point is calculated based on the outside temperatures.
2. Can select control mode using the pull down menu: Reheat On/Off modes.
3. Click on Loop box to have the control loop set-up window to appear.
4. Click on Loop name to have the control loop trend window to appear.
5. Click on a temperature reading to have the temperature trend window to appear.
6. Can enter manual temperature values if a sensor goes bad. 0=use temperature sensor reading.
7. Click on button on bottom of screen to navigate to different screens.

Note: No control of the water pumps.

CONTROL LOOP SET-UP SCREEN:

Front Office HVAC- CONTROL LOOP SET-UP

AIR HANDLER

DAMPER LOOP	CW LOOP	ST LOOP
PV: 77.0 DegF	PV: 70.0 DegF	PV: 70.0 DegF
SP: 65.0 DegF	SP: 65.0 DegF	SP: 65.0 DegF
OUT: 0.0 %	OUT: 100.0 %	OUT: 0.0 %
MODE: MANUAL	MODE: AUTO	MODE: MANUAL

Toggle Mode: Loop Mode Loop Mode Loop Mode

COOLING MODE

PERIMETER

CE LOOP	HE LOOP
PV: 55.0 DegF	PV: 55.0 DegF
SP: 55.0 DegF	SP: 180.0 DegF
OUT: 10.0 %	OUT: 100.0 %
MODE: AUTO	MODE: MANUAL

Loop Mode Loop Mode

REHEAT

REHEAT IS OFF

RH LOOP
PV: 119.0 DegF
SP: 180.0 DegF
OUT: 100.0 %
MODE: MANUAL

Loop Mode

	Gain: 2.00	2.00	2.00
Reset:	0.50	0.50	0.50
Out High Limit:	90 %	100 %	100 %
Out Low Limit:	0 %	0 %	0 %

AIR TEMPERATURES

	RAW	FILTERED	FILTER WT	6	6
T-OA: 60.0	60.0 DegF	###.# DegF	6 SEC	●	FILTER
T-MA: 77.0	77.0 DegF	77.0 DegF	6 SEC	●	FILTER
T-DA: 70.0	70.0 DegF	70.0 DegF	6 SEC	●	FILTER
T-RA: 80.0	80.0 DegF	80.0 DegF	6 SEC	●	FILTER

WATER TEMPERATURES

	RAW	FILTERED	FILTER WT	6	6
T-PER: 55.0	55.0 DegF	55.0 DegF	6 SEC	●	FILTER
T-RH: 119.0	119.0 DegF	119.0 DegF	6 SEC	●	FILTER
T-CW:					

MAIN MENU
AIR HANDLER
PERIMETER
REHEAT
SET-UP
GAUGES
ALARMS
7

1. Click on Loop box to have the control loop set-up window to appear.
2. Click on Loop name to have the control loop trend window to appear.
3. Click on "Loop Mode" button to manually toggle the control loop mode.
Note: be careful, since this function is performed automatically by the program.
4. Click on Loop parameters to change Gain/Reset/Output Clamps.
(Note: need to save to controller flash memory)
5. Can enter manual temperature values if a sensor goes bad. 0=use temperature sensor reading.
6. Click on "Filter" button to filter the temperature readings. Also can enter a filter time weight.
Green indicator = filter being used.
7. Click on button on bottom of screen to navigate to different screens.

ALARM POP-UP SCREEN:

Time	Date	Name	State	Value	Comment
12:39:05	09/06/2016	MAIN SYSTEM PUMPS ALARM	In Alarm	TRUE	MAIN SYSTEM PUMPS NOT RUNNING!

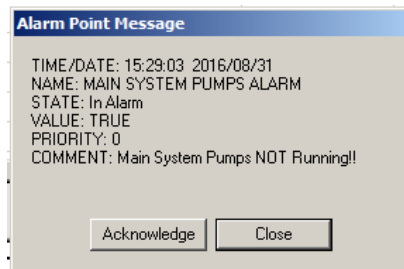
ALARM POP-UP SCREEN

Acknowledge Acknowledge All Silence UnSilence **ENABLE ALARMS**

1. Click on the “Alarm” button at the bottom of the screen to display the Alarm screen which will pop-up over the current screen being viewed. To close click on the [X] in the top right corner of screen.

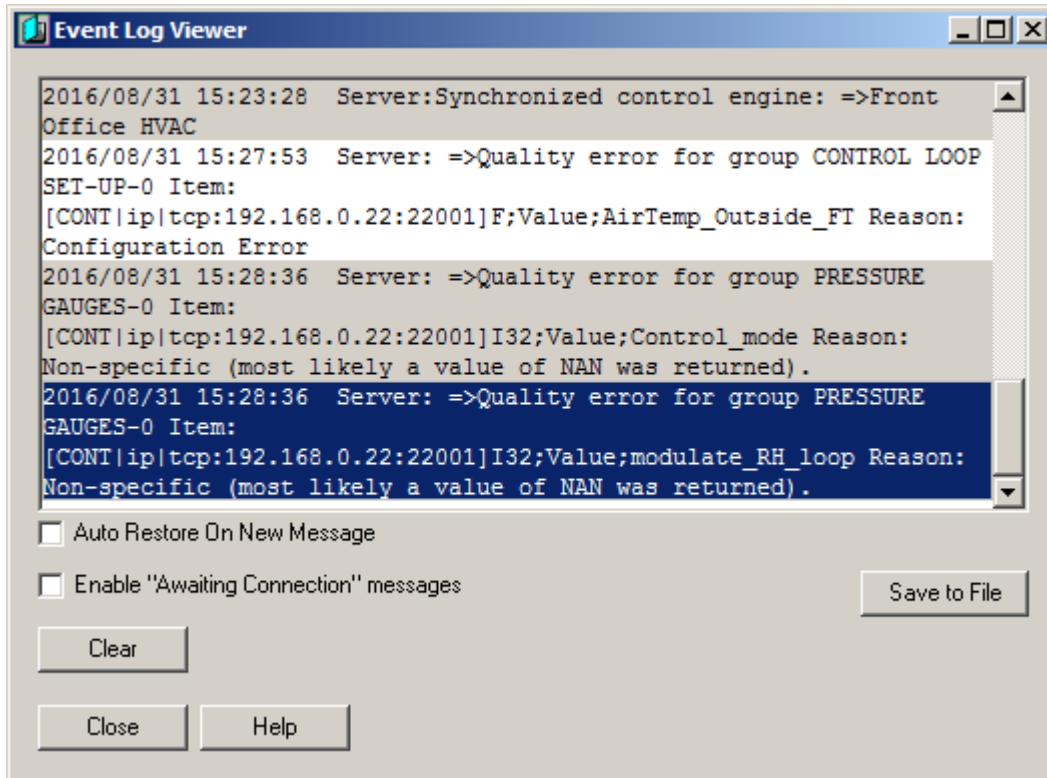
Note: If runtime program has just started, it’s important to enable the alarms. Also found on the Main Menu screen.

2. An alarm pop-up message will appear whenever an alarm occurs. Options are to acknowledge the alarm or close the alarm message.



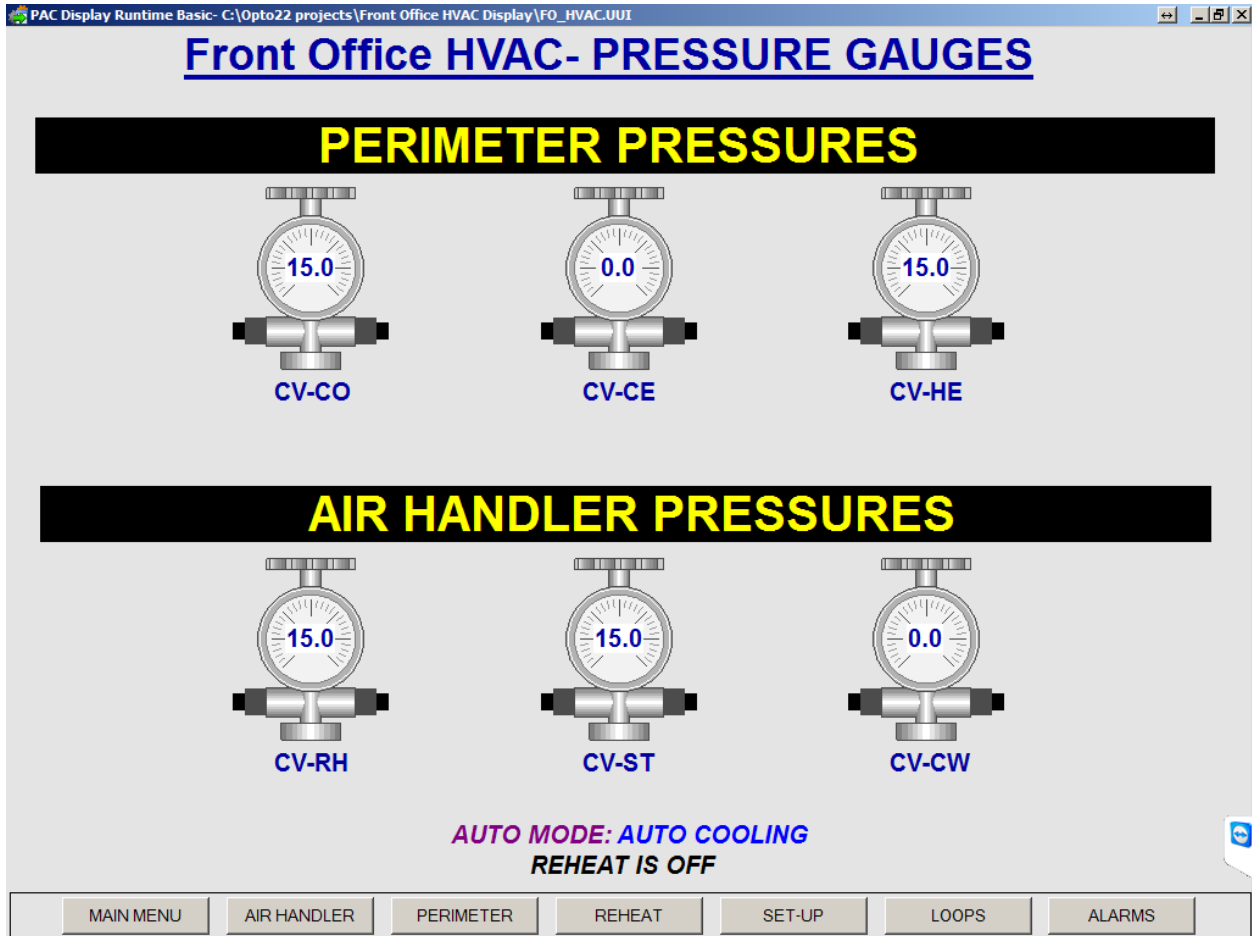
ALARM POP-UP MESSAGE

EVENT LOG POP-UP SCREEN:



1. Click on the "Event Log" button on the Main menu screen to display the event logs.

PRESSURE GUAGES SCREEN:



1. Displays what the actual pressure gauges should be reading.

Notes:

- This can be used to troubleshoot a problem with the control valves and system operation.
- The actual gauges will be mounted above the HMI screen, so it will be easy to check pressure readings.