

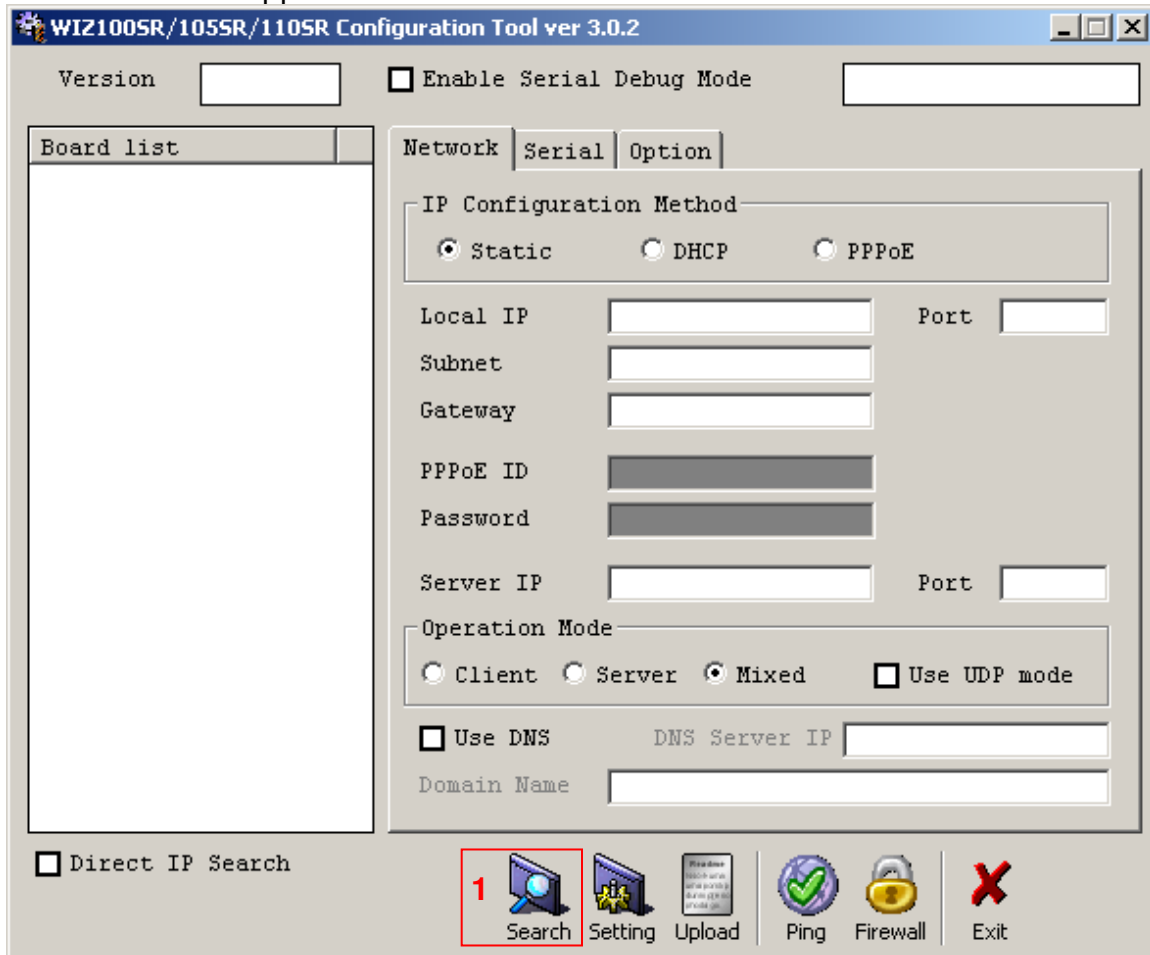
Initial Set-Up Instructions for the WIZ110SR Board.

1. Connect WIZ110SR board to the Ethernet hub that is also connected to your computer. Use a LAN cable (RJ45 CAT-5 Ethernet cable)
2. Connect the 5vdc power supply to the board.

Run the “Configuration Tool” Software:

Launch WIZ1x0SR_105SR_CFG_V3_0_2.exe

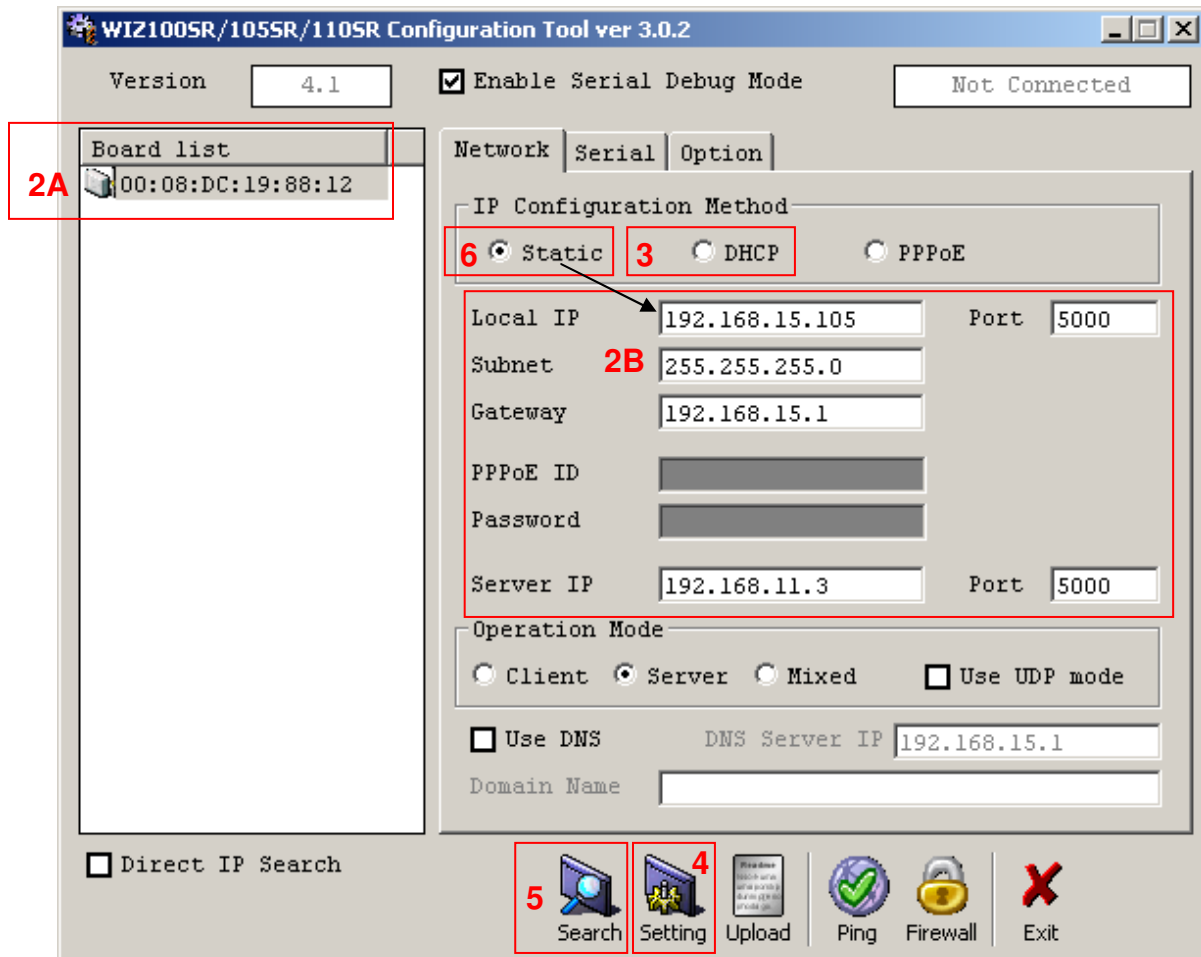
This window will appear:



1. Search for the WIZ110SR board. Click on the “**Search**” button.

Initial Set-Up Instructions for the WIZ110SR Board.

2. After the search is complete:
 - A. The MAC address of the board will be listed in the board list to the left.
 - B. The fields to the right will now contain network information.

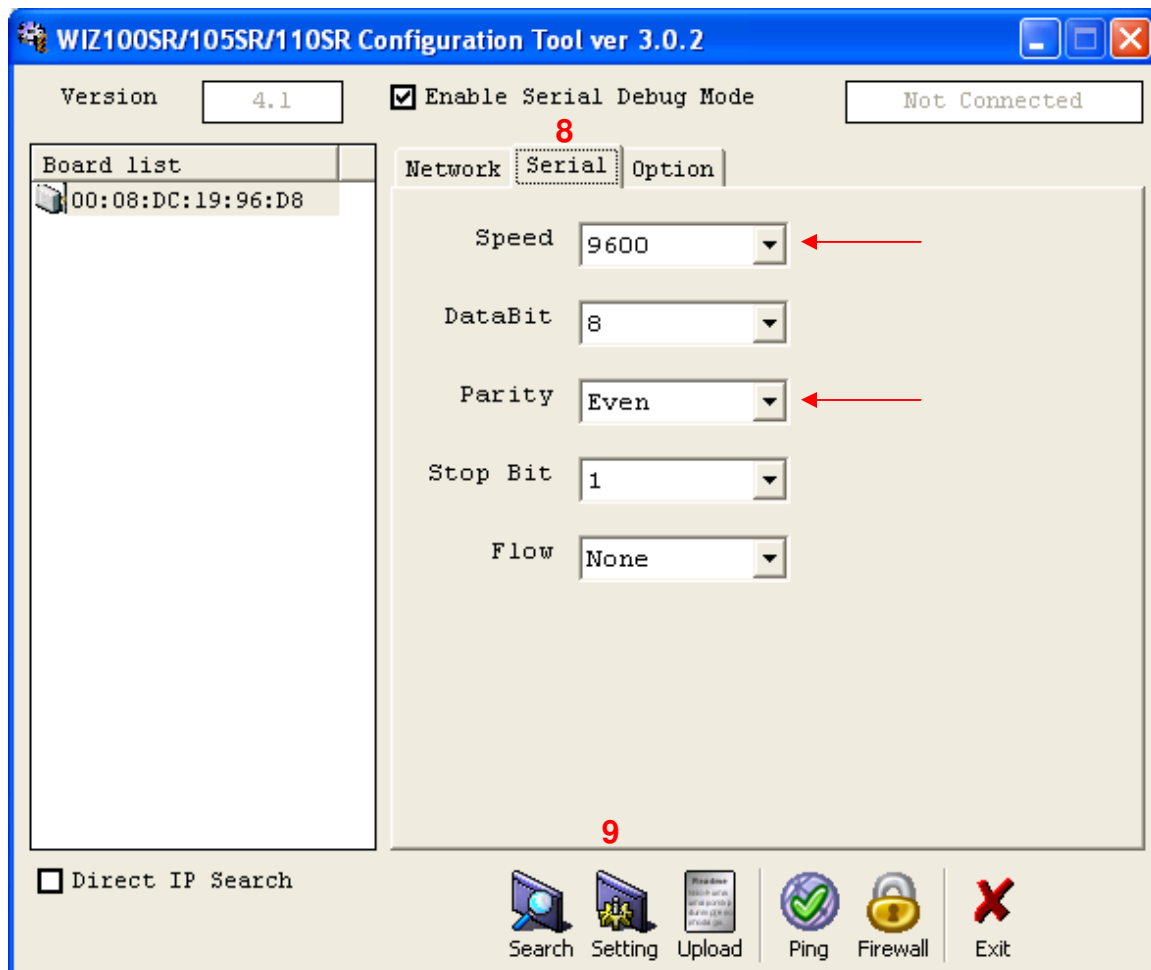


3. To get an Local IP address assigned automatically, click on the “**DHCP**” option button.
4. Click on the “**Setting**” button, to send new set-up to WIZ110SR board.
5. Click on the “**Search**” button, to retrieve the new board set-up parameters.
6. To make sure that the Local IP address does not change, click on the “**Static**” option button and then repeat steps 4 and 5 above.
7. Enter IP address in the HEM software program under Set-Up tab.

Initial Set-Up Instructions for the WIZ110SR Board. (continued)**Set-Up Serial Interface:**

8. Click on “**Serial**” Tab and make changes below:

Speed: **9600** baud
Data Bits: **8**
Parity: **Even**
Stop Bit: **1**
Flow: **none**



9. Click on the “**Setting**” button, to send new set-up to WIZ110SR board.

10. Board Set-Up Complete.